

# OX-MSC612

## PCI- E to 2- port RS- 232 Interface Converter

### User manual

#### I. Summary

OX-MSC612 is a PCI-E to two-port RS-232 serial card, which can convert single-ended PCI-E signals to RS-232 signals, with a fast transient suppression protector, which is designed to protect RS-232 interface, using today's advanced TVS tube, under normal circumstances, the TVS tube is in a high resistance state. When the TVS tube is subjected to an instantaneous high-energy shock, it can reduce the impedance at both ends at a very high speed and absorb a large current. Therefore, the voltage across the two ends is clamped to a predetermined value, and the subsequent circuit elements are protected from damage due to transient high voltage shocks. This protector can effectively suppress lightning (LIGHTNING) and ESD, provide 600W lightning surge protection for signal lines, as well as surges and transient overvoltages generated on the lines due to various reasons, and the extremely small inter-electrode capacitance Ensures RS-232 high-speed transmission.

#### n. Feature

##### Hardware Interface:

Connection Type: DB9 male x2;  
Bus: PCI-E

##### Signal

RS-232: DCD, RXD, TXD, DTR, GND, DSR, RTS, CTS, RI

Transmission rate: 300bps-921.6Kbps

Data bits: 5, 6, 7, 8

Stop bits: 1, 2

Check digit: support odd, even, no check, blank 0, flag 1

Flow Control: RTS/CTS XON/XOFF

Working temperature: -40 -85°C

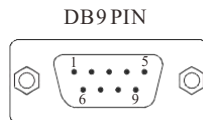
Interface protection: 600W surge protection for RS-232 interface signal line

Support system: WIN 98/2000/2003/XP/VISTA/2008/7/2012/8/8.1/2016/10/11/2019/NT4.0/Linux

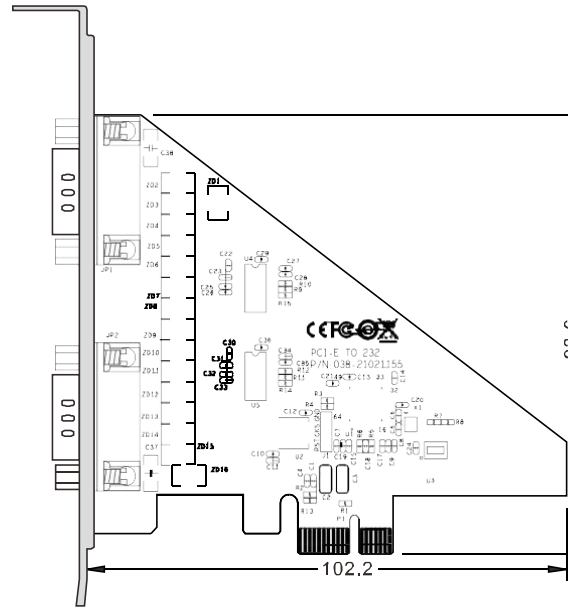
#### ffi. Connector and Signal

1. DB9 pin type: RS-232 output signal pin assignment (Port1 - Port2)

DB9 (PIN)	RS-232 Interface Signal
1	Carrier Detect DCD
2	Receive Data SIN (RXD)
3	Send Data SOUT(TXD)
4	Data Device Preparation DTR
5	Signal Line GND
6	Data Device Preparation DSR
7	Request to Send RTS
8	Clear to Send CTS
9	Ringing Indication RI



#### IV. Dimension



#### V. Troubleshooting

##### 1. Data communication failed

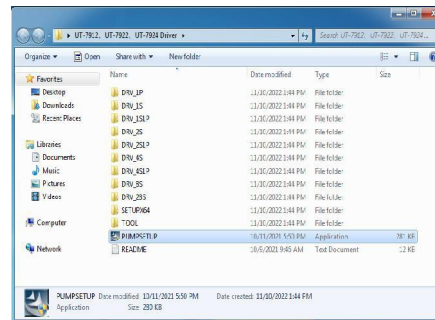
- A. Check whether the PCI-E interface is plugged in properly
- B. Check whether the wiring is wrong
- C. Check whether the terminals are connected well

##### 2. Data loss or error

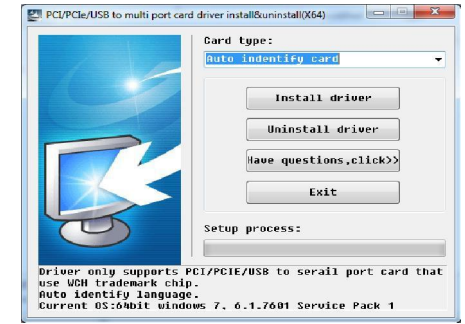
- A. Check whether the data rate and format of both ends of the data communication device are consistent.

#### VI. Steps for Installing the Driver

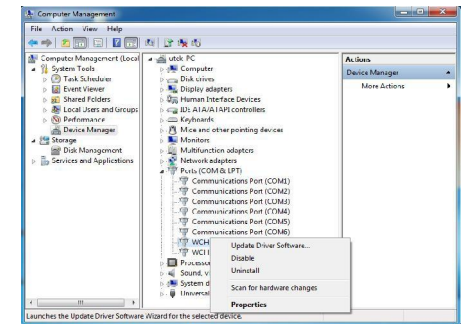
1. Save the driver to the local, shut down and insert the serial card, and turn on the computer.



Method 1: Click the PUMPSETUP.EXE program in step 1, the default automatic identification card, click to install the driver, the driver installation progress is completed, close the program, enter the device manager, and the installation is complete.



Method 2: Enter the device manager, find the multi-serial port device, right-click to update the device driver, find the local driver save location, install it according to the computer version, and enter the port option to view after installation.



If the serial port has not been virtualized before, the default COM port of the system is COM3, 4, and the actual port number shall prevail, so that the OX-MSC612 driver is installed.